

# Pumping Station 7 Force Main

Emergency Repair Update and  
2021 Capital Budget Amendment

Commission Meeting  
July 15, 2021







## Where we left-off on May 27th:

- Internal inspection complete
- Crack identified in the 1948 force main...confident 1948 force main was leaking
- Line across entire Beltline right-of-way (approx. 330')
- 4-6 weeks to receive materials (liner and resin)
- Delivery of closure pipe and clamps for both sides
- Approximately \$50,000 spent to-date
- Total cost estimate: ~\$300K

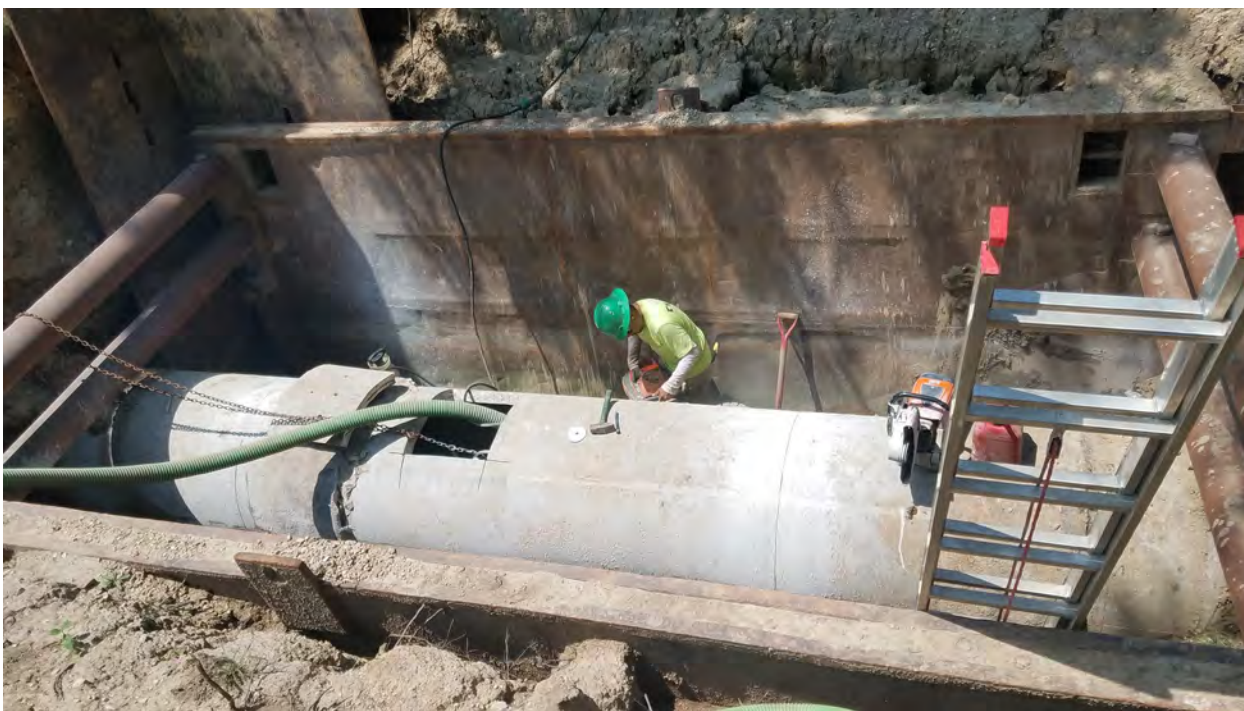


## July 6th:

- Lining process begins
- Remove clamp
- Pump-out pipe







## July 7<sup>th</sup>:

- Remove top half of pipe
- To provide access for liner installation







## July 8<sup>th</sup>:

- Lining process begins
- 12mm (1/2") thick







## July 8<sup>th</sup>:

- Liner installation continues
- Overnight
- Approx. 14 hours



## July 9<sup>th</sup>:

- Lining complete
- Length = 329'
- End seals installed
- Televised







## July 12<sup>th</sup>:

- Remaining half of pipe removed
- Pipe closures begin
- On-going



## Summary & Next Steps:

- Lining is complete
- 329' of internal liner installed
- 1-2 weeks to complete pipe closures and start-up force main
- Backfilling and site restoration by end of July
- Approximately \$74,000 spent to date
- Total cost: Still estimated at ~\$300K

## Cost of Lining vs. Joint Grouting:

- Joint grouting is 10%-20% of the cost of lining
- So....if pipe is good condition and only the joints are bad/leaking, joint grouting is a cost-effective alternative



# Fund Reserves Policy

## Madison Metropolitan Sewerage District Commission Policy Statement

### Fund Reserves

#### **POLICY OBJECTIVE:**

The district's reserves policy is intended to ensure that the district has adequate working capital to meet financial demands of unforeseen circumstances; provide adequate liquidity to support efficient operations and secure debt obligations.

#### **POLICY STATEMENT:**

The district will maintain reserves in each of its funds as delineated below. In the event that circumstances necessitate the use of available reserves in any of its funds, the district will restore the designated reserve amount within one to three years of its depletion below the targeted minimum end-of-year reserve level.





# Why Capital Projects Fund Reserves?

- 1. Capital Projects Fund has sufficient reserves to fund the repair work**
- 2. One purpose of capital reserves is to fund emergency projects**
- 3. Repair involves work on a capital asset that will extend its useful life**
- 4. Primary purpose of operating reserves is to protect against unpredictable revenue fluctuations**





# Capital Projects Budget Amendment

## III. Commission Action, When Required

A. Commission action is required for the following with a simple majority vote unless otherwise noted:

1. Approval of the annual capital projects budget and the debt service budget.
2. Amendments to the adopted capital projects budget that increase the capital projects budget total: The resolution presented to the district commission for approval must include the sources and uses of funds in the amendment.

Approval of amendments to an adopted budget requires a two-thirds vote of all commissioners and the publication of a class one notice of the change within 10 days per Wisconsin Statutes chapter 65.90.

3. The addition of a new project not included in the adopted capital projects budget. The resolution presented to the commission for approval must describe the total project cost, including the amount estimated to be spent in the current year and over the life of the project.

- a. If funds are available within the capital projects budget without increasing the capital budget total.

## TABLE CIP-2 | 2020-2022 EXPENDITURES BY PROJECT (CONT.)

		2020 Actual	2021 Estimated	2022 Anticipated
<b>PUMPING STATIONS AND FORCE MAINS</b>		<b>\$3,542,000</b>	<b>\$10,297,000</b>	<b>\$6,841,000</b>
C01	Grass Lake Dike Stabilization	30,000	400,000	345,000
C02	PS 4 Rehabilitaiton	2,000	320,000	1,669,000
C03	PS 17 Rehabilitation	-	20,000	402,000
C04	PS 17 Force Main Relief- Phase 2	-	90,000	288,000
C05	PS 16 Force Main Rehabilitation	-	15,000	67,000
C06	Emergency Power Generation at District Pumping Stations	-	-	5,000
C07	Miscellaneous Collection System Improvements	17,000	-	90,000
N/A	Automated Power Transfer at Pump Stations 10 and 11	159,000	84,000	-
	PS 13 & PS 14 Rehabilitation	544,000	5,963,000	3,976,000
	PS 17 Force Main Relief- Phase 1	437,000	2,905,000	-
	PS 7 Improvements	2,353,000	-	-
	PS 7 Force Main Emergency Repair	-	500,000	-
<b>CAPITAL BUDGET EXPENSES</b>		<b>\$75,000</b>	<b>\$408,000</b>	<b>\$475,000</b>
D01	Capital Budget Expenses	-	52,000	52,000
D02	Collection System Facilities Plan Update	-	56,000	40,000
D03	Badger Mill Creek Phosphorus Compliance	8,000	300,000	206,000
D04	Plan for District Properties	-	-	177,000
N/A	Plant Asset Management Plan Implementation	67,000	-	-
<b>Grand Total</b>		<b>\$25,539,000</b>	<b>\$28,147,000</b>	<b>\$21,126,000</b>

## TABLE CIP-3 | ANNUAL BUDGET AND EXPENDITURES

	Adopted Capital Budget		2022 Proposed CIP
	2020	2021	2022
Budgets	\$44,133,000	\$39,869,000	\$21,126,000
Expenditures (Actual 2020; Estimated 2021)	25,539,000	28,147,000	
<i>Underspending</i>	<i>\$18,594,000</i>	<i>\$11,722,000</i>	



# Requested Action

***The Commission is requested to approve resolution 2021-07-15-R11 to amend the 2021 Capital Projects Budget by including the Pumping Station 7 Force Main Emergency Repair project at a total project cost not to exceed \$500,000.***

