

UPPER SUGAR RIVER WATERSHED ASSOCIATION

**Preliminary Results
Badger Mill Creek
Habitat Assessment
June 2024**



We envision a community that is inspired to take collective action to ensure a healthy watershed for all, now and in the future.

River Road near confluence with Sugar River

Features:

Turbid

Heavily silted

Unobstructed

Meanders

Some riparian vegetation

Canoe/Kayak Launch



Hwy 69 Bridge

Features:

Turbid

Heavily silted

Obstructed flow (trees & branches)

Meanders

Riparian vegetation both sides

Frequent fishing above and below bridge



Bruce Street

Features:

Clear bottom of the stream visible

Approximately 50% silt

50% gravel-cobble-sand

A few trees-branches mostly unobstructed flow

Meanders

Riparian vegetation both sides a mix of trees and shrubs mostly shrubs



Hwy M Bridge

Features:

Turbid

Approximately 100% silt

Several trees-branches obstruct flow

Slight meanders with channelization

Riparian vegetation both sides a mix trees and shrubs mostly trees



Above Hwy M Bridge

Features:

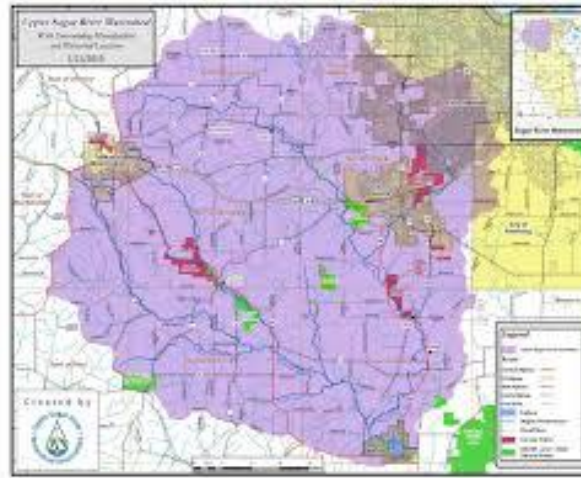
Relatively clear

Approximately 10-25% silt

Few trees-branches obstruct flow

Slight meanders with channelization

Riparian vegetation on one side a mix of trees and shrubs mostly trees



Hwy PB

Features:

Somewhat turbid though stream bottom is visible

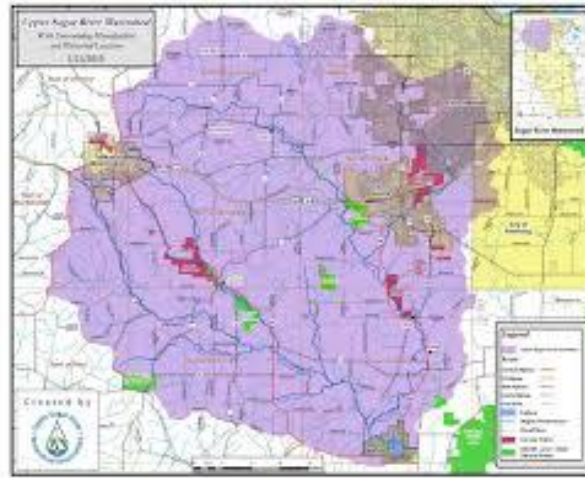
Approximately 50-75% silt

Some branches obstruct flow

Mostly channelized

Riparian vegetation trees and shrubs on both sides

Sloping eroded banks



Upper Badger Mill Creek

Features:

Somewhat turbid though stream bottom is visible

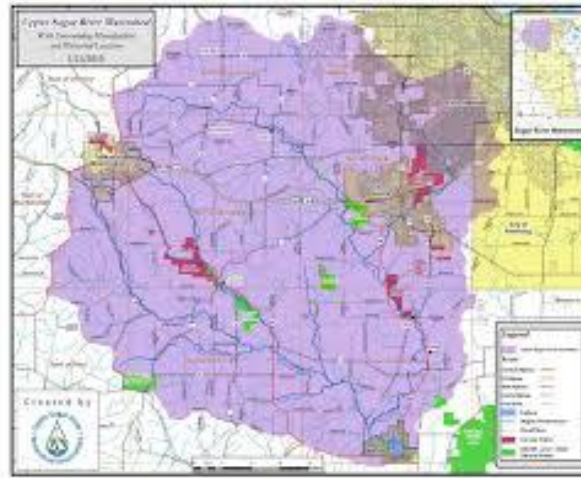
Approximately 50-75% silt

Some branches and trees obstruct flow

Slight meander

Riparian vegetation trees and shrubs on both sides

Sloping eroded banks



Impressions and Preliminary Observations

Upper Badger Mill Creek tends to be narrow and shallow several sections with thick sediments. The upper reaches of the stream is a mix of trails, paths and marsh/wetland.

Middle reaches includes straight channels in the upper half of the reach much of which parallels IAT and restored habitat such as root wads with meanders in the lower half. This section includes some of the only riffle habitats in the stream. Middle reaches is predominantly residential land cover with some marsh/wetland and much used hiking trails and paved paths.

The lower reach of Badger Mill Creek is characterized predominantly by meanders flowing through agricultural land cover with dairy cattle and row crops. It is of note that habitat assessments in this reach in 2014-2016 included fairly common and extensive gravel-cobble riffle habitat and these are 75-100% silt covered now.