

Wastewater Collection and Treatment

Wastewater is any water that has been used for washing, flushing or processing and needs to be cleaned at a wastewater treatment plant.

Once water becomes unfit for human consumption, it is considered wastewater and needs to be treated at an approved facility.

The sanitary sewer system is designed and built to take wastewater from homes, businesses and industries within the Madison Metropolitan Sewerage District service area and convey it to its regional wastewater treatment plant.



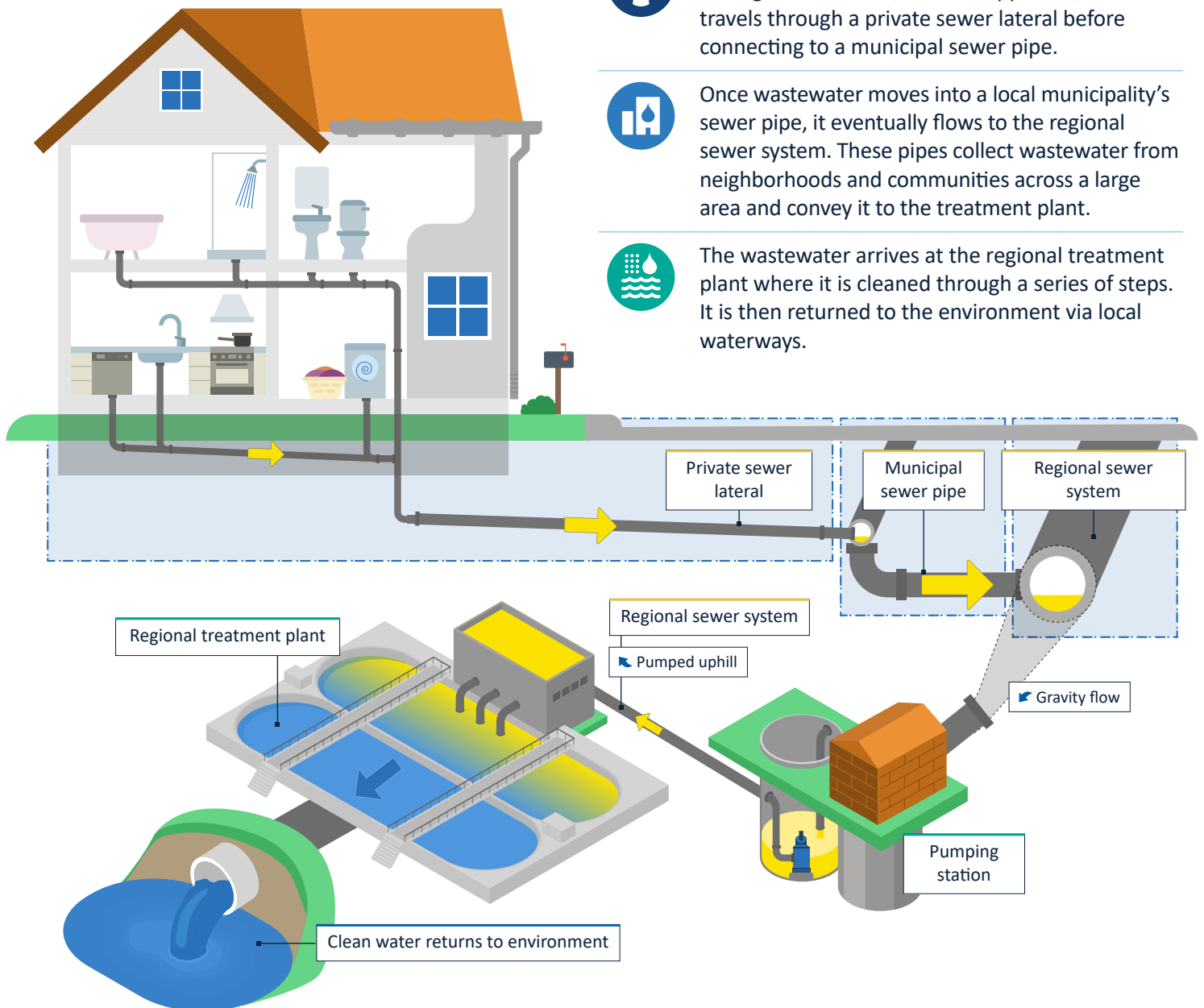
When wastewater leaves a home or business through a drain, sink, toilet or appliance, it first travels through a private sewer lateral before connecting to a municipal sewer pipe.



Once wastewater moves into a local municipality's sewer pipe, it eventually flows to the regional sewer system. These pipes collect wastewater from neighborhoods and communities across a large area and convey it to the treatment plant.



The wastewater arrives at the regional treatment plant where it is cleaned through a series of steps. It is then returned to the environment via local waterways.



DRi!PS

Disconnect and Reduce Inflow and Infiltration to Private Sewers

✉ info@madsewer.org

☎ (608) 222-1201

👉 madsewer.org/driips