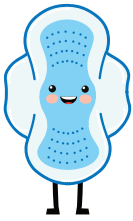


IS IT FLUSHABLE?

Putting garbage down drains and toilets clogs pipes and creates messy sewer backups. Even items labeled “flushable” shouldn’t be flushed. Only flush toilet paper and stuff that’s naturally from your body – everything else belongs in the trash!

THROW IN TRASH:



tampons,
condoms,
sanitary napkins



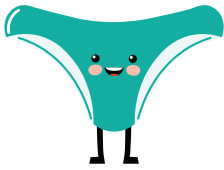
bandages,
dressings



dental floss,
string, thread



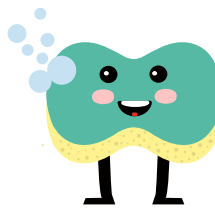
baby wipes,
moist wipes,
paper towels



underwear,
washcloths,
towels, rags



wrappers,
plastic bags

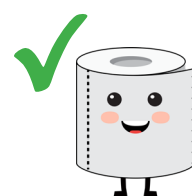


toilet bowl
scrub pads,
sponges



pet waste, dog
poop, cat feces,
fish gravel

FLUSH ONLY THESE:

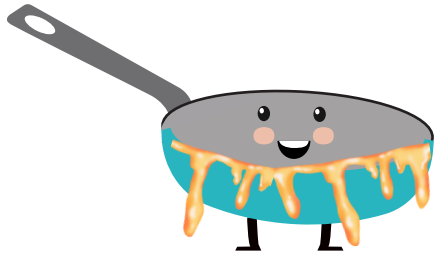


Madison Metropolitan
Sewerage District

madsewer.org/flushables

DISPOSING OF SPECIAL WASTE?

Properly dispose of your medications, hazardous items and special waste. Because anything you put in the water you use is eventually returned to the environment.



Fat, Oil and Grease (FOG)

FOG from meat or dairy has a high risk of clogging pipes. To dispose of FOG:

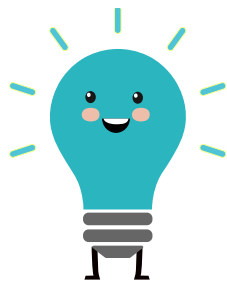
- Cool to harden before tossing
- Scrape solid FOG into trash
- Can it into a container, then toss
- Wipe with paper towels and put in trash



Paint and Varnishes

Latex or acrylic paint can be dried completely and trashed. Oil-based paints, varnishes and paint thinner belongs at Clean Sweep at the Dane County Landfill.

link.madsewer.org/CleanSweep



Light Bulbs

Search Dane County's disposal directory for where to bring used incandescent or fluorescent light bulbs.

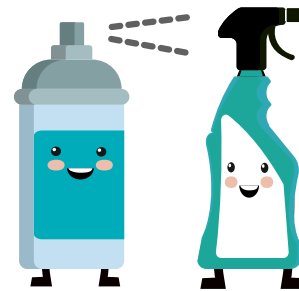
link.madsewer.org/DCwaste



Medicines

Take your pills, vitamins, medications or pharmaceutical waste in a sealed plastic bag to a MedDrop location.

SaferCommunity.net/MedDrop



Household Waste

Chemicals, cleaners, pesticides, electronics, and more can be hazardous to the environment.

Do not put these items in the trash or down drains. Instead, bring items to Dane County Clean Sweep.

link.madsewer.org/CleanSweep

**Madison Metropolitan
Sewerage District**

For more information on safely disposing of waste, contact your local municipality or visit MadSewer.org.