

**Introduction of Annexation Request and Scheduling of Public Hearing  
for the Kennedy Drive Parcels in the Town of Westport**

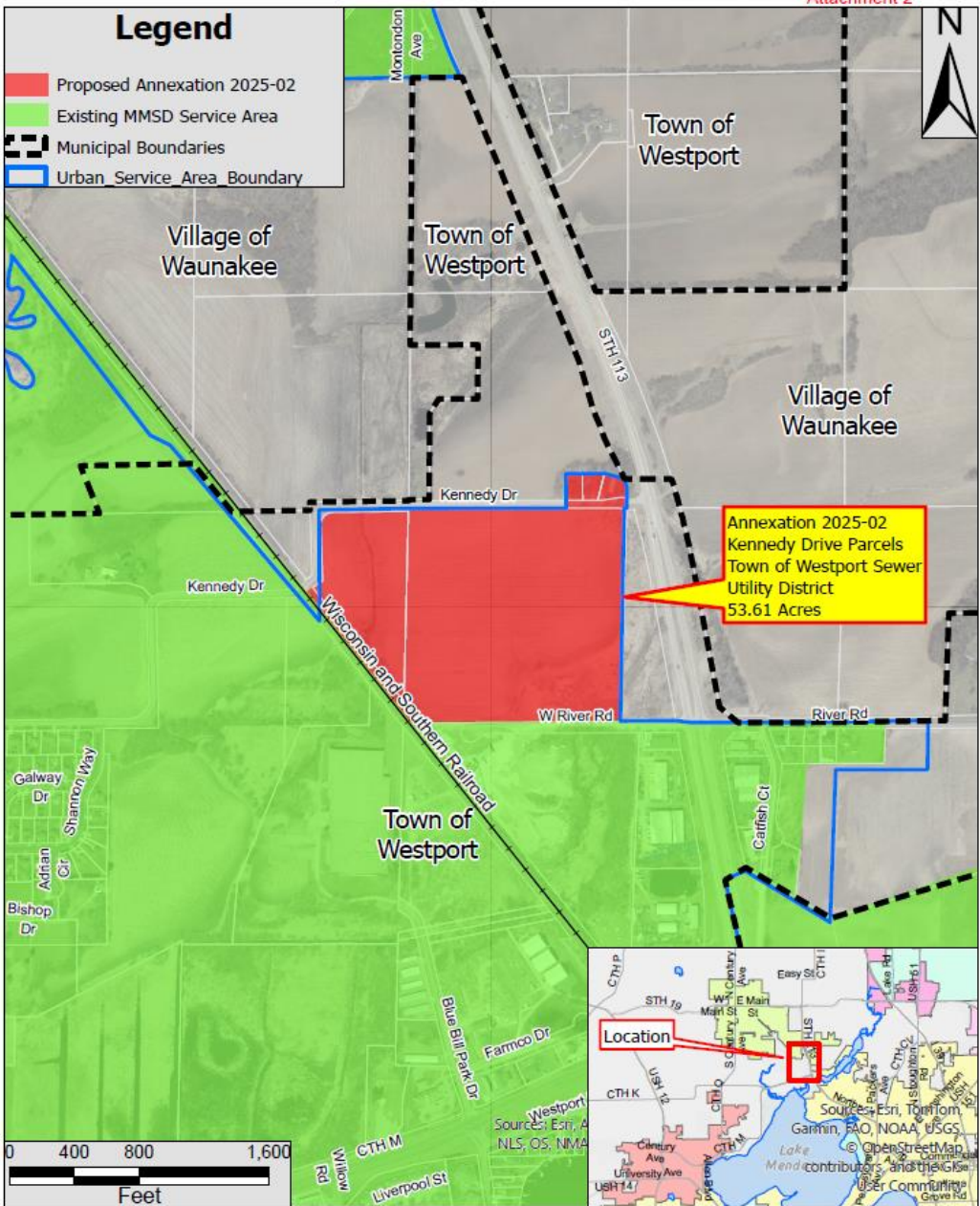
**February 13, 2025**

Madison Metropolitan Sewerage District

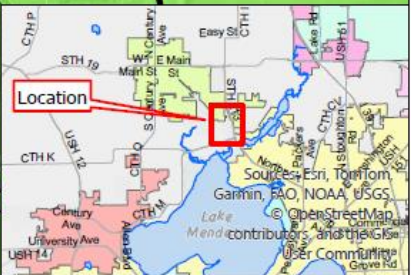


### Legend

- Proposed Annexation 2025-02
- Existing MMSD Service Area
- Municipal Boundaries
- Urban Service Area Boundary



Annexation 2025-02  
Kennedy Drive Parcels  
Town of Westport Sewer  
Utility District  
53.61 Acres



Boundary Annexation to MMSD: Kennedy Dr. Parcels  
Town of Westport Sewer Utility District  
MMSD Annexation No. 2025-02

User Name: curts  
Date: 2/7/2025

# Annexation Types

- Expedited
  - Defined by ss. 200.15(1)(a)(3) of Wisconsin Statutes
  - Lands annexed or attached to a City, Village or Town Sanitary District
  - Upon receiving notice, MMSD Commission or RPC has 30 days to object
  - Without objection, the lands are added to the District's service area



# Annexation Types

- Petitioned
  - Defined by ss. 200.15(2) of Wisconsin Statutes
  - Lands within other territories (not City, Village or Town Sanitary District)
  - Class 2 notice and public hearing required
  - Commission may approve the annexation upon a determination that the standards of **ss. 200.05 (4) (b) and (c) and 200.15 (3) are met**



# Relevant Statutes

- 200.05 Creation.
  - (4)(b) The formation of the district will promote sewerage management policies and operation and will be consistent with adopted plans of municipal, regional and state agencies; and
  - (4)(c) The formation of the district will promote the public health and welfare and will effect efficiency and economy in sewerage management, based upon current generally accepted engineering standards regarding prevention and abatement of environmental pollution and federal and state rules and policies in furtherance thereof.



# Relevant Statutes

- 200.15 Addition of territory.
  - (3) Annexations under subs. (1) and (2) may be subject to reasonable requirements as to participation by newly annexed areas toward the cost of existing or proposed district facilities.



# Analysis and Alternatives

- Option 1 (Staff Recommendation)
  - Schedule a public hearing for the March 13, 2025 Commission meeting
  - Staff can meet Class 2 publication requirements
- Option 2
  - Schedule a public hearing later than March 13, 2025



# Questions?

Madison Metropolitan  
Sewerage District

Madison Metropolitan Sewerage District

Madison Metropolitan Sewerage District

