

Nine Springs Valley Interceptor – Mineral Point Extension: Pipe Investigation Update

Commission Meeting
March 13, 2025

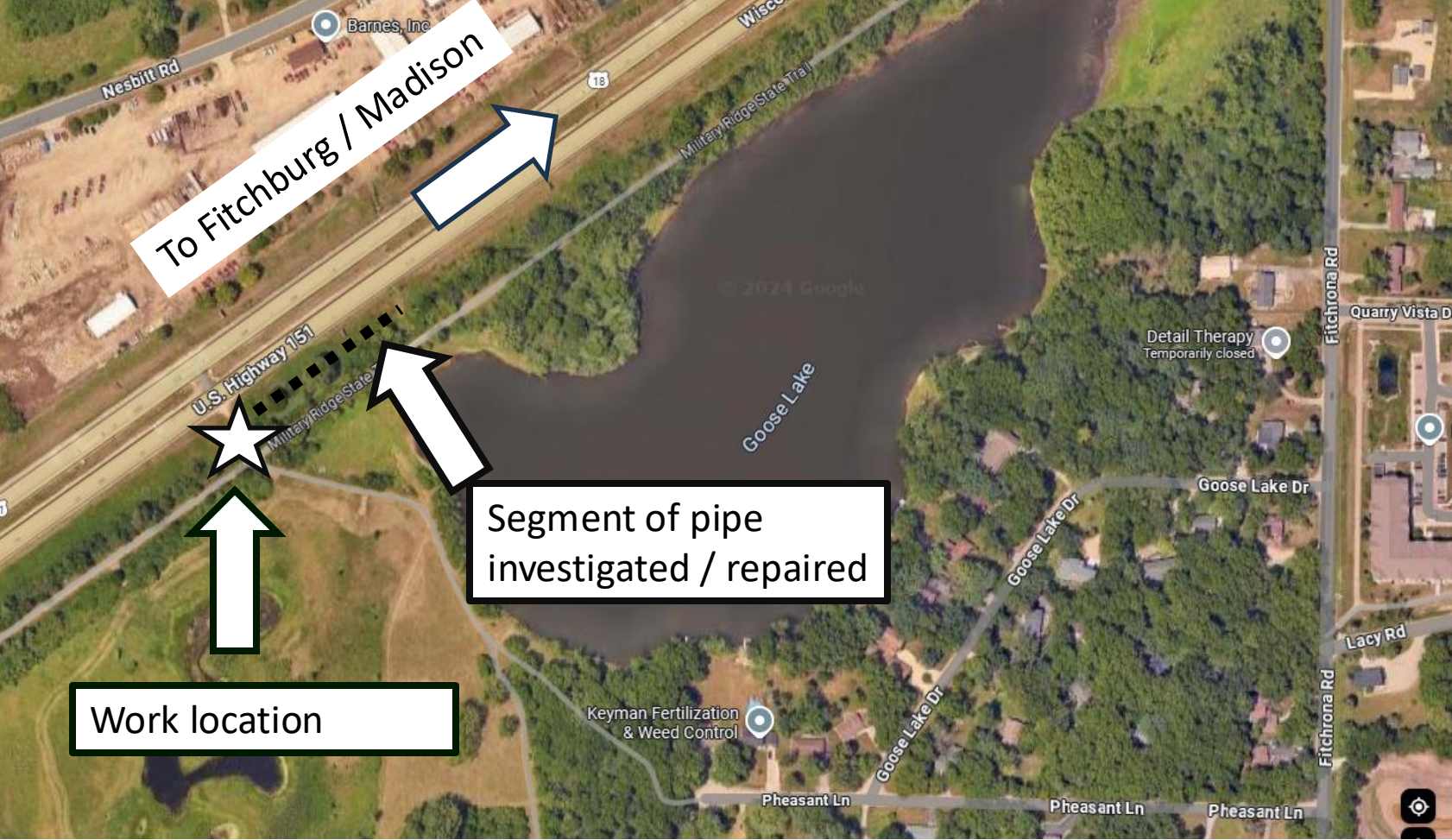
Madison Metropolitan Sewerage District



Agenda

Location Map

- Staff introduction
- Location
- Work completed
- Videos / Photos
- Next Steps
- Questions



Work completed

- Cleaning of pipe, intense cleaning at sags (daily)
- Dewatering of pipe, at sags and endpoints (daily)
- Grouting of multiple joints, 11 joints repaired
- >1250 Gallons of Polyacrylamide grout
- 60 tubes of Polyurethane grout
- Reduced (stopped) the infiltration of groundwater & soil
- Stabilized the soil / foundation of the pipe
- By-pass pumping system removed



Video – O/S Joint 300-ft



Video: Offset Joint during repair



- Video to display the I/I
 - Water
 - Material

Video: Joint showing material infiltration



Photos – O/S Joint 300-ft During Repair

Photo: Dewatering tube hooked to vac truck



Photo: Offset Joint, gusher



Photo: Offset Joint, top of pipe



Key Notes:

- I/I rate
- Water level



Repair Photos – O/S Joint 300-ft after repair

Media Player → MH12-107

Key Notes:

- No pumping
- No water movement

0:03:35

MH12-401 → MH12-107

03 • Mar • 2025



00.0 psi 142.3 ft

Madison Metropolitan Sewerage District



Photos – O/S Joint 284-ft – During Repair



Key Notes:

- Decreased water level
- No water movement



Photos – O/S Joint 284-ft after repair

Key Notes:

- Water level
- See bottom pipe



Madison Metropolitan Sewerage District

MH12-401 → MH12-107
03 • Mar • 2025



00.0 psi 150.5 ft

Repair Photos – Other joints after repair



Key Notes:

- Water level
- See bottom pipe



Why Not CIPP

- Goal was to stabilize the pipe
- Grouting of joints was sufficient to reduce (stop) infiltration of groundwater & soil
- Any pipe deficiencies (joints or cracks) leaking were addressed
- Worst areas- The sags were addressed requiring the most effort
- Entry occurred during the repair – allowing upfront inspection/information gathering as compared to any previous camera inspection



Next Steps

- Restore site
- Finalize costs
- Replace pipe as part of Nine Springs Valley Interceptor – Phase 2
 - Schedule: Design 2025, Construction 2026



Questions?

Madison Metropolitan
Sewerage District

Madison Metropolitan Sewerage District

Madison Metropolitan Sewerage District

